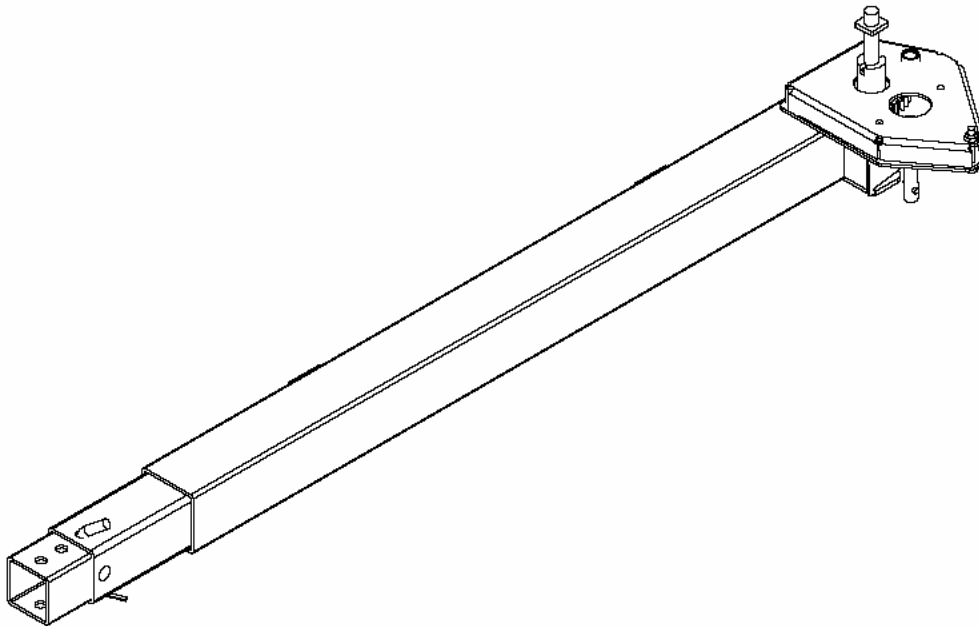




5TH Wheel Landing Gear

Operation and Maintenance Guide

5500 Series



5TH Wheel Landing Gear

Operation and Maintenance Guide 5500 Series

This set of RBW 5500 Series 5th Wheel Landing Gear was designed for long life and minimal maintenance. Please follow the operating guidelines to insure the best possible performance and ask your authorized dealer for a demonstration.

Extending your Landing Gear

1. Always lower the quick drop legs first. This bottom leg can be lowered in 1" or 1 ½ " intervals up to a total length of 15 inches. Be certain that the leg is fully secured in place and on a safe foundation before you begin lifting the RV.
2. When both quick drop legs are as close as possible to a safe foundation, begin lifting by activating both landing gear motor with the toggle switch identified on the RV. Do not extend the powered inner leg more than 18 inches.

Never unhitch and allow the 5th wheel trailer to drop to the ground. This will cause damage not covered by the warranty.

Extending your Landing Gear Manually

1. Your 5th Wheel Landing Gear may be operated manually in the event that insufficient electrical power is available. Start by locating the jack handle. Insert the jack handle into the override access located on the powered side of your landing gear.
 2. Use the jack handle to extend the landing gear.
 3. See your authorized dealer for a demonstration.
-

Retracting your Landing Gear

1. After properly hitching up to your tow vehicle, retract the landing gear by activating the landing gear motor with the toggle switch identified on your coach.

Avoid placing all the trailer weight on one leg.

2. Stop retracting the inner leg, leaving a 3 inch extension between the outer body and the Jack Foot. Raising the inner leg until it will no longer retract will damage the internal parts of the landing gear.



Do not over retract your landing gear. Repeated over retraction may cause damage not covered by the product warranty.

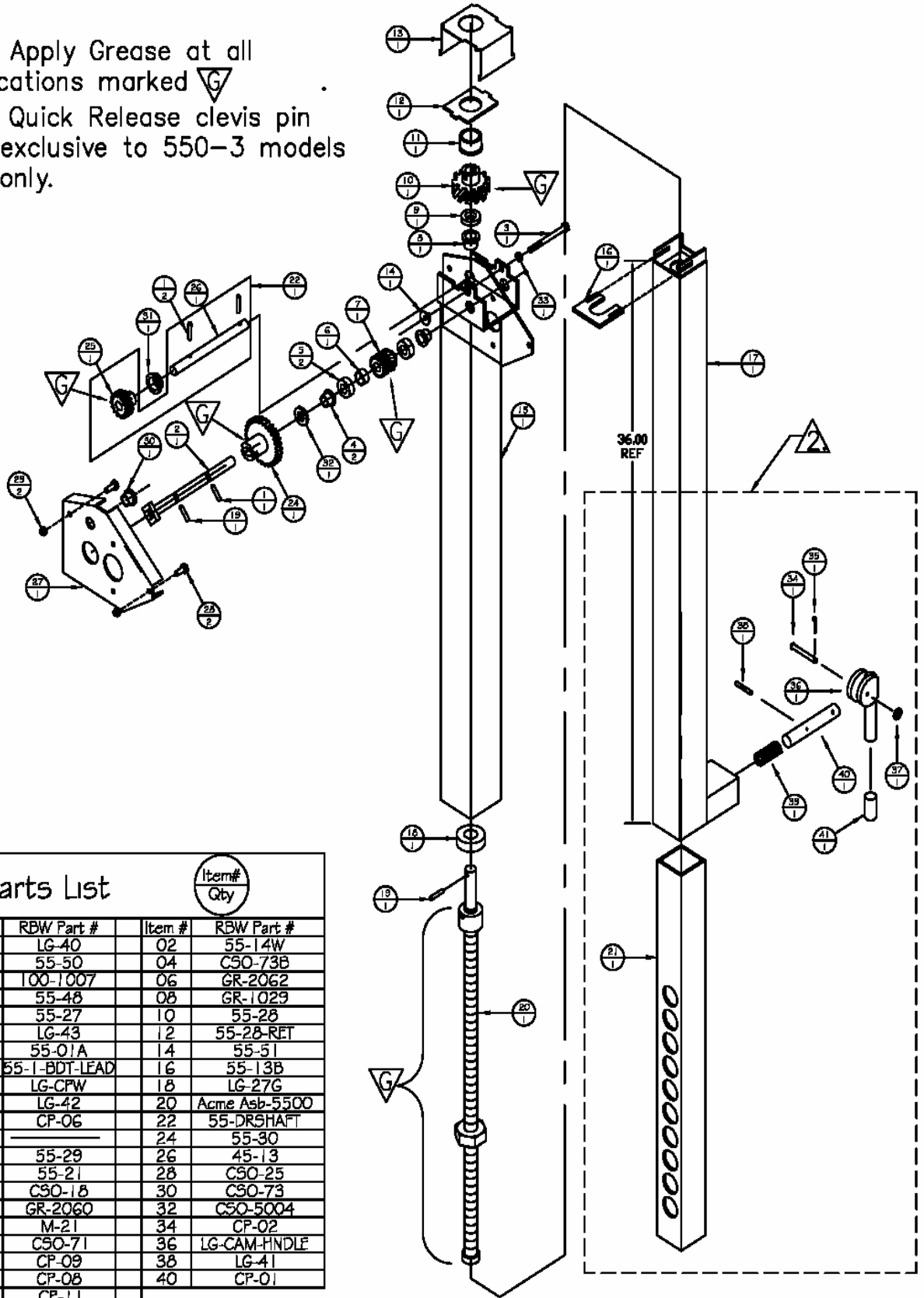
3. Replace the quick drop legs to the highest point for maximum ground clearance before you move your coach.

Maintaining your landing gear.


1. Apply grease at least once a year as indicated in the following illustrations.
2. Examine the landing gear for external damage such as bending from backing the tow vehicle into the hitch too aggressively. Damaged legs can greatly reduce the products ability to perform properly and cause additional damage to other components of your landing gear.
3. Insure adequate power (12V) for best performance. Low voltage, for example, will increase the amp draw causing blown fuses and reduced lifting ability. Corrosion, damaged wires, or a poor power source can effect performance.

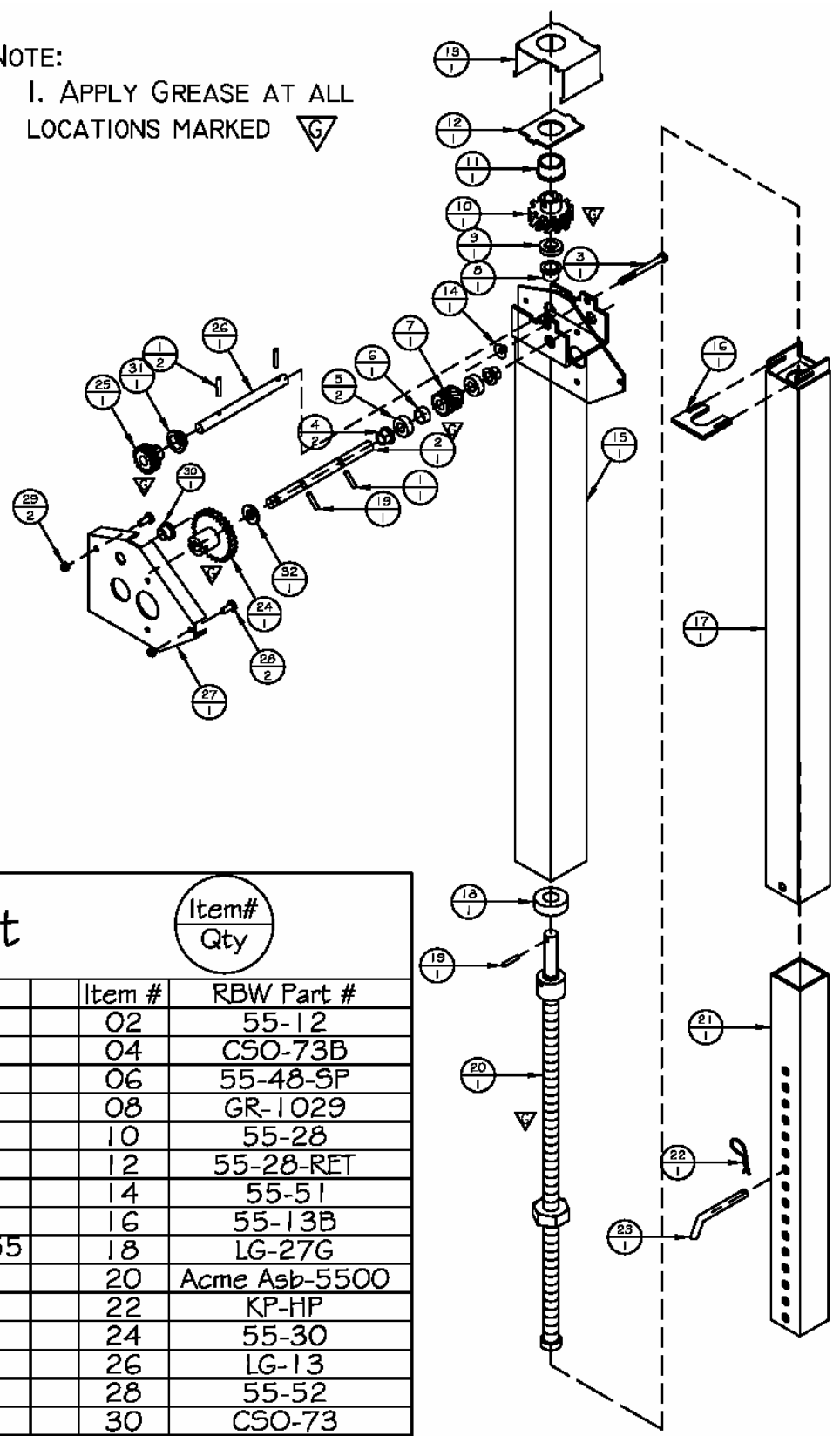
Note:

1. Apply Grease at all locations marked 
-  Quick Release clevis pin exclusive to 550-3 models only.



Parts List		Item#	Qty
01	LG-40	02	55-14W
03	55-50	04	C50-73B
05	100-1007	06	GR-2062
07	55-48	08	GR-1029
09	55-27	10	55-28
11	LG-43	12	55-28-RET
13	55-01A	14	55-51
15	55-1-BDT-LEAD	16	55-13B
17	LG-CPW	18	LG-27G
19	LG-42	20	Acme Asb-5500
21	CP-06	22	55-DRSHAFT
23		24	55-30
25	55-29	26	45-13
27	55-21	28	C90-25
29	C50-18	30	C50-73
31	GR-2060	32	C50-5004
33	M-21	34	CP-02
35	C50-71	36	LG-CAM-HNDLE
37	CP-09	38	LG-41
39	CP-08	40	CP-01
41	CP-11		

NOTE:
 I. APPLY GREASE AT ALL
 LOCATIONS MARKED 

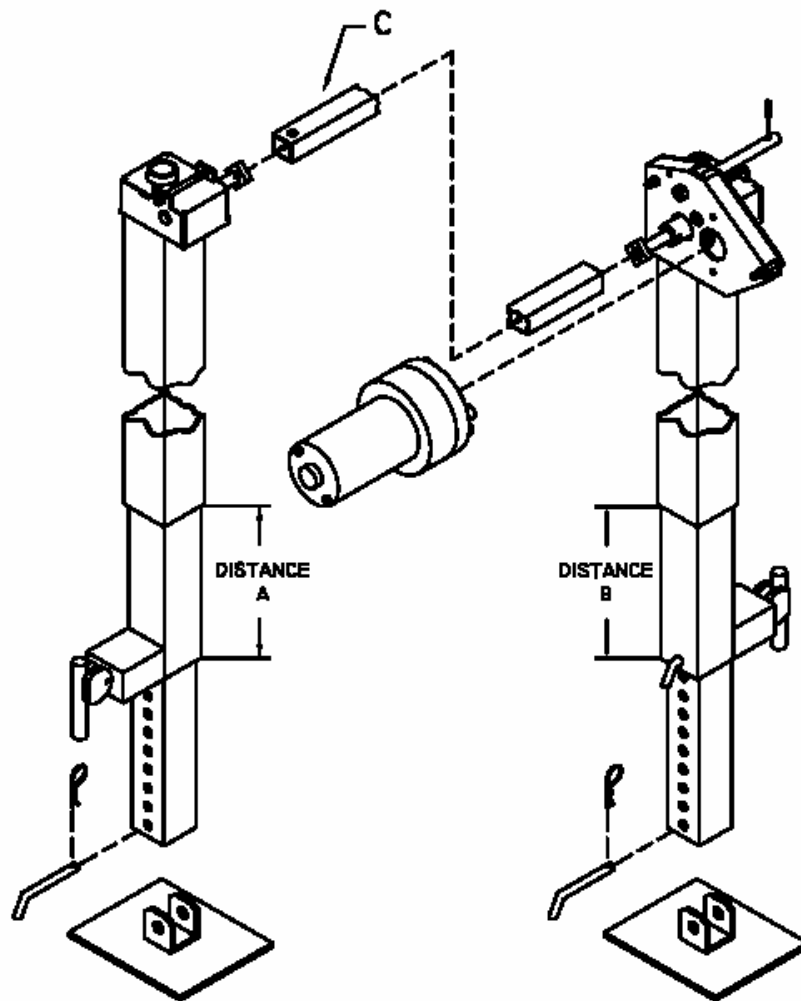


Parts List		Item# Qty	
Item #	RBW Part #	Item #	RBW Part #
01	LG-40	02	55-12
03	55-50	04	C50-73B
05	100-1007	06	55-48-SP
07	55-48	08	GR-1029
09	55-27	10	55-28
11	LG-43	12	55-28-RET
13	55-01A	14	55-51
15	55-1-BDT	16	55-13B
17	Innerleg-45/55	18	LG-27G
19	LG-42	20	Acme Asb-5500
21	LG-04	22	KP-HP
23	KP-CP	24	55-30
25	55-29	26	LG-13
27	55-21	28	55-52
29	C50-18	30	C50-73
31	GR-2060	32	C50-5004

RECOMMENDED INSTALLATION INSTRUCTIONS

WHEN INSTALLING THE LG-5500, IT IS NECESSARY THAT BOTH THE LEADER AND THE FOLLOWER LEGS ARE IN TIME WITH EACH OTHER. THIS CAN EASILY BE DONE BY MEASURING THE DISTANCE THAT THE INNER LEG HAS EXTENDED OUT OF THE OUTER LEG HOUSING (REFER TO DISTANCE A AND B). AFTER BOTH LEGS ARE EXTENDED EVENLY, ATTACH THE CROSS TUBE (C). THIS WILL ENSURE EVEN AND LEVEL DEPLOYMENT OF THE LANDING GEAR.

THE CROSS TUBE SHOULD BE PINNED ON THE FOLLOWER SIDE (SHORT CONNECTION SHAFT). PROPER CROSS TUBE LENGTH MUST BE MAINTAINED TO ENSURE THIS CONNECTION.



RBW Industries, Inc. Limited 1 Year Warranty

RBW Industries, Inc. warrants its products against defects in material and workmanship under normal use and service, ordinary wear and tear excepted, for one year from the date of purchase at retail. Any part found to have a defect in material or workmanship, will be replaced or repaired by RBW when returned with transportation charges paid.

If the defect was caused by damage resulting from improper installation, alteration, misuse or unreasonable use, including but not limited to, loading the product beyond capacity, RBW shall not be required to replace or repair such product, in every case, this warranty covers only the defective part and does not provide for reimbursement of the retail price of the part or labor charges.

RBW shall not be held liable for any incidental or consequential damages for breach of any expressed or implied warranty on any RBW product.

There are no warranties that extend beyond the description of the face hereof. RBW is extending no other warranties, express or implied, nor any warranties of merchantability nor fitness for particular purpose. Any such warranties of merchantability or fitness for a particular purpose are expressly excluded.

This warranty is designed and intended to fully comply with the requirements of the Magnusson-Moss Warranty Act and all regulations issued by the Federal Trade Commission in connection therewith. It is not intended to violate any state law or regulation containing more stringent requirements, and such requirements become part of the warranty insofar as required by that act.

The owner has available the legal remedies provided by the Magnusson-Moss Warranty Act, Public Law 93-637, 88 STAT.2183-2193: 15 U.S. CODE, SECS 23021-2312, and any applicable state statutes.

RBW Industries, Inc.
5740 Schaefer Ave.
Chino, CA 91710
909-591-5359